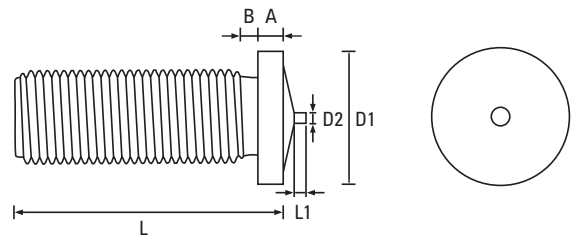


CD Weld Studs

Fasteners for Sheet Metal Applications

Threaded Type PT DIN EN ISO 13918

Copper Coated



Thread	M3	M4	M5	M6	M8	Thread
D1 ±0.2	4.5	5.5	6.5	7.5	9.0	D1 ±0.2
A	0.7 - 1.4	0.7 - 1.4	0.8 - 1.4	0.8 - 1.4	0.8 - 1.4	A
B max	1.5	1.5	2.0	2.0	3.0	B max
D2 ±0.8	0.60	0.65	0.75	0.75	0.75	D2 ±0.8
L1 ±0.5	0.55	0.55	0.80	0.80	0.85	L1 ±0.5



Scan the QR Code to view technical drawings for this product range
<https://www.lancasterfastener.com/drawings-cdwsptcu>

L - Length mm						L - Length mm
6	●	●				6
8	●	●	●	●		8
10	●	●	●	●	●	10
12	●	●	●	●	●	12
15	●	●	●	●	●	15
16	●	●	●	●	●	16
20	●	●	●	●	●	20
25	●	●	●	●	●	25
30	●	●	●	●	●	30
35		●	●	●	●	35
40		●	●	●	●	40
45			●	●	●	45
50			●	●	●	50
55					●	55
60					●	60

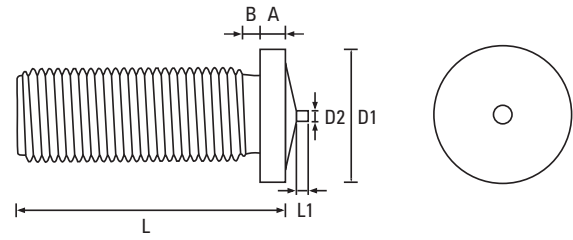
● Copper Coated - preferred and available from stock.


PRODUCT CODE EXAMPLE
CDWSPT50016CU

PRODUCT DESCRIPTION EXAMPLE
M5 x 16 DIN EN ISO 13918 Threaded Type PT CD Weld Stud Copper Coated

Threaded Type PT DIN EN ISO 13918

A2 Stainless Steel



Thread	M3	M4	M5	M6	M8	M10	Thread
D1 ±0.2	4.5	5.5	6.5	7.5	9.0	10.5	D1 ±0.2
A	0.7 - 1.4	0.7 - 1.4	0.8 - 1.4	0.8 - 1.4	0.8 - 1.4	0.7 - 1.4	A
B max	1.5	1.5	2.0	2.0	3.0	3.0	B max
D2 ±0.8	0.60	0.65	0.75	0.75	0.75	0.75	D2 ±0.8
L1 ±0.5	0.55	0.55	0.80	0.80	0.85	0.75	L1 ±0.5
L - Length mm	 <p>Scan the QR Code to view technical drawings for this product range https://www.lancasterfastener.com/drawings-for-cdwspta2</p>						L - Length mm
6	●	●					6
8	●	●	●	●			8
10	●	●	●	●	●		10
12	●	●	●	●	●		12
15	●	●	●	●	●		15
16	●	●	●	●	●		16
20	●	●	●	●	●	●	20
25	●	●	●	●	●	●	25
30	●	●	●	●	●		30
35		●	●	●	●		35
40		●	●	●	●		40
45			●	●			45
50			●	●	●		50
55							55
60							60

● A2 Stainless Steel - preferred and available from stock.

PRODUCT CODE EXAMPLE
CDWSPT30020A2

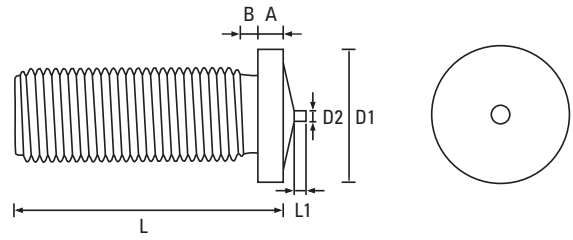
PRODUCT DESCRIPTION EXAMPLE
M3 x 20 DIN EN ISO 13918 Threaded Type PT CD Weld Stud A2 Stainless Steel


CD Weld Studs

Fasteners for Sheet Metal Applications

Threaded Type PT DIN EN ISO 13918

Aluminium



Thread	M3	M4	M5	M6	M8	Thread
D1 ±0.2	4.5	5.5	6.5	7.5	9.0	D1 ±0.2
A	0.7 - 1.4	0.7 - 1.4	0.8 - 1.4	0.8 - 1.4	0.8 - 1.4	A
B max	1.5	1.5	2.0	2.0	3.0	B max
D2 ±0.8	0.60	0.65	0.75	0.75	0.75	D2 ±0.8
L1 ±0.5	0.55	0.55	0.80	0.80	0.85	L1 ±0.5
L - Length mm	 <p>Scan the QR Code to view technical drawings for this product range https://www.lancasterfastener.com/drawings-cdwsptal</p>					L - Length mm
6	●	●				6
8	●	●	●			8
10	●	●	●	●		10
12	●	●	●	●		12
15	●	●	●	●		15
16		●	●	●		16
20	●	●	●	●		20
25	●	●	●	●		25
30	●	●	●	●		30
35		●	●	●		35
40						40
45						45
50						50
55						55
60						60

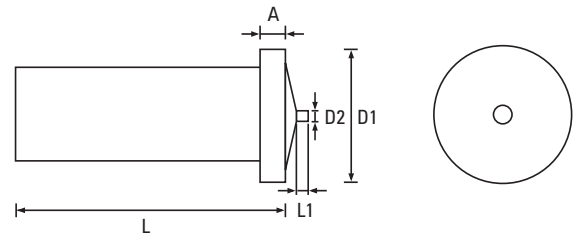
● Aluminium - preferred and available from stock.


PRODUCT CODE EXAMPLE
CDWSPT60025AL

PRODUCT DESCRIPTION EXAMPLE
M6 x 25 DIN EN ISO 13918 Threaded Type PT CD Weld Stud Aluminium Alloy

Unthreaded Type UT DIN EN ISO 13918

Copper Coated



Dia.	3	4	5	6	7.1	Dia.
D1 ±0.2	4.5	5.5	6.5	7.5	9.0	D1 ±0.2
A	0.7 - 1.4	0.7 - 1.4	0.8 - 1.4	0.8 - 1.4	0.8 - 1.4	A
D2 ±0.8	0.60	0.65	0.75	0.75	0.75	D2 ±0.8
L1 ±0.5	0.55	0.55	0.80	0.80	0.85	L1 ±0.5
L - Length mm	 <p>Scan the QR Code to view technical drawings for this product range https://www.lancasterfastener.com/drawings-cdwsutcu</p>					L - Length mm
6						6
8			●			8
10		●	●			10
12		●	●			12
15		●	●	●		15
16						16
20		●				20
25			●	●		25
30				●		30
35						35
40						40
45						45
50						50
55						55
60						60

● Copper Coated - preferred and available from stock.

PRODUCT CODE EXAMPLE
CDWSUT60025CU

PRODUCT DESCRIPTION EXAMPLE
6 x 25 DIN EN ISO 13918 Unthreaded Type UT CD Weld Stud Copper Coated

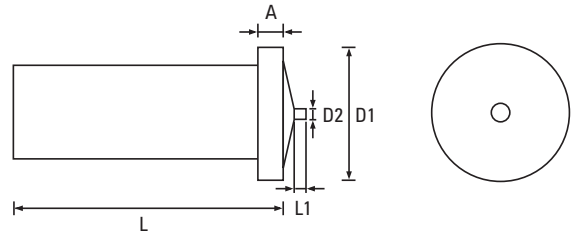
Screws for Plastics
ISO & DIN 7500 Tap-Fix® Screws
Machine Screws
Self-Tapping Screws
Self-Drilling Screws
Micro Diameter Screws
Hammer Drive Screws
K-Series® Setzmuttern
Rivet Bushes
Self-Clinching Fasteners
CD Weld Studs
Brass Inserts for Plastics

CD Weld Studs

Fasteners for Sheet Metal Applications

Unthreaded Type UT DIN EN ISO 13918

A2 Stainless Steel



Dia.	3	4	5	6	7.1	Dia.
D1 ±0.2	4.5	5.5	6.5	7.5	9.0	D1 ±0.2
A	0.7 - 1.4	0.7 - 1.4	0.8 - 1.4	0.8 - 1.4	0.8 - 1.4	A
D2 ±0.8	0.60	0.65	0.75	0.75	0.75	D2 ±0.8
L1 ±0.5	0.55	0.55	0.80	0.80	0.85	L1 ±0.5



Scan the QR Code to view technical drawings for this product range
<https://www.lancasterfastener.com/drawings-for-cdwsuta2>

L - Length mm						L - Length mm
6						6
8		●	●			8
10		●	●	●		10
12			●	●		12
15	●		●	●		15
16						16
20			●	●		20
25			●			25
30						30
35						35
40						40
45						45
50						50
55						55
60						60

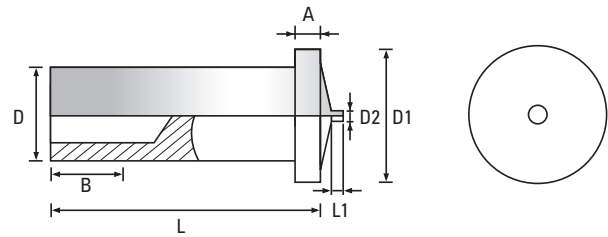
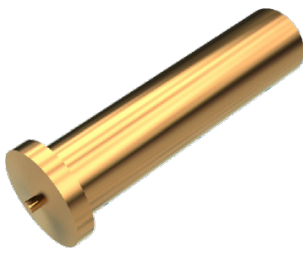
● A2 Stainless Steel - preferred and available from stock.

PRODUCT CODE EXAMPLE
 CDWSUT40010A2

PRODUCT DESCRIPTION EXAMPLE
 4 x 10 DIN EN ISO 13918 Unthreaded Type UT CD Weld Stud A2 Stainless Steel

Internally Threaded Type IT DIN EN ISO 13918

Copper Coated



Thread	M3	M4	M5	-	-	Thread
D ±0.1	5	6	7.1	-	-	D ±0.1
D1 ±0.2	6.5	7.5	9	-	-	D1 ±0.2
A	0.8 - 1.4	0.8 - 1.4	0.8 - 1.4	-	-	A
B +0.5 -0	5	6	7.5	-	-	B +0.5 -0
D2 ±0.8	0.75	0.75	0.75	-	-	D2 ±0.8
L1 ±0.5	0.80	0.80	0.85	-	-	L1 ±0.5



Scan the QR Code to view technical drawings for this product range
<https://www.lancasterfastener.com/drawings-cdwsitcu>

L - Length mm						L - Length mm
6	●					6
8	●	●				8
10	●	●	●			10
12	●	●	●			12
15	●	●	●			15
16						16
20	●	●	●			20
25		●	●			25
30						30
35						35
40						40
45						45
50						50
55						55
60						60

● Copper Coated - preferred and available from stock.

PRODUCT CODE EXAMPLE
 CDWSIT30020CU

PRODUCT DESCRIPTION EXAMPLE
 M3 x 20 DIN EN ISO 13918 Internally Threaded Type IT CD Weld Stud Copper Coated