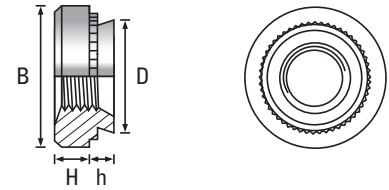



Nuts

Steel / Zinc Plated (CR3)



| Thread | M2.5 | | | M3 | | | M3 Alt | | | M3.5 | | | M4 | | | M5 | | | M6 | | | M8 | | M10 | | Thread |
|-----------------------------|------|------|------|------|------|------|--------|------|------|------|------|------|------|------|------|------|------|------|-------|------|------|-------|------|-------|------|-----------------------------|
| | -0 | -1 | -2 | -0 | -1 | -2 | -0 | -1 | -2 | -0 | -1 | -2 | -0 | -1 | -2 | -0 | -1 | -2 | -0 | -1 | -2 | -1 | -2 | -1 | -2 | |
| h _{max} | 0.77 | 0.97 | 1.38 | 0.76 | 0.97 | 1.37 | 0.76 | 0.97 | 1.37 | 0.76 | 0.97 | 1.37 | 0.76 | 0.97 | 1.37 | 0.76 | 0.97 | 1.37 | 0.97 | 1.37 | 2.21 | 1.37 | 2.21 | 2.21 | 3.05 | h _{max} |
| Min. Rec. sheet thickness | 0.8 | 1.0 | 1.4 | 0.8 | 1.0 | 1.4 | 0.8 | 1.0 | 1.4 | 0.8 | 1.0 | 1.4 | 0.8 | 1.0 | 1.4 | 0.8 | 1.0 | 1.4 | 1.0 | 1.4 | 2.3 | 1.4 | 2.3 | 2.31 | 3.18 | Min. Rec. sheet thickness |
| D _{Max} | 4.22 | | | 4.22 | | | 4.73 | | | 4.73 | | | 5.38 | | | 6.38 | | | 8.72 | | | 10.44 | | 13.97 | | D _{Max} |
| B _{±0.25} | 6.30 | | | 6.30 | | | 7.10 | | | 7.10 | | | 7.90 | | | 8.70 | | | 11.05 | | | 12.65 | | 17.35 | | B _{±0.25} |
| H _{±0.25} | 1.50 | | | 1.50 | | | 1.50 | | | 1.50 | | | 2.00 | | | 2.00 | | | 4.10 | | | 5.50 | | 7.48 | | H _{±0.25} |
| Hole Size +0.08 -0.00 | 4.25 | | | 4.25 | | | 4.75 | | | 4.75 | | | 5.40 | | | 6.40 | | | 8.75 | | | 10.50 | | 14.00 | | Hole Size +0.08 -0.00 |
| Min. distance to sheet edge | 4.80 | | | 4.80 | | | 5.60 | | | 5.60 | | | 6.90 | | | 7.10 | | | 8.60 | | | 9.70 | | 13.50 | | Min. distance to sheet edge |

| CODE |  Scan the QR Code to view technical drawings for this product range https://www.lancasterfastener.com/drawings-hcnstzc | | | | | | | | | | | | | | | | | | | | | | | | CODE | | |
|------|---|---|---|---|---|---|---|--|--|--|--|--|--|---|---|--|---|--|--|--|---|---|---|---|------|---|----|
| -0 | ● | | | ● | | | | | | | | | | | | | | | | | | | | | | | -0 |
| -1 | | ● | | | ● | | ● | | | | | | | ● | | | ● | | | | ● | | ● | | ● | | -1 |
| -2 | | | ● | | | ● | | | | | | | | | ● | | ● | | | | | ● | | ● | | ● | -2 |
| -3 | | | | | | | | | | | | | | | | | | | | | | | | | | | -3 |
| - | | | | | | | | | | | | | | | | | | | | | | | | | | | - |

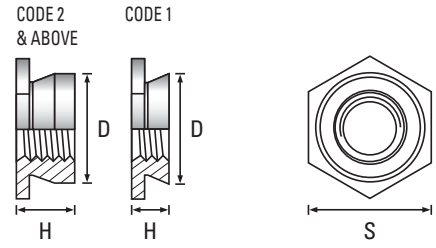
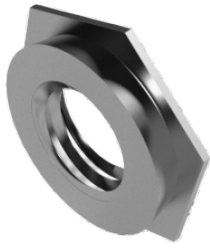
● Steel / Zinc Plated (CR3) - preferred and available from stock.

PRODUCT CODE EXAMPLE
HCN04-1STZC


PRODUCT DESCRIPTION EXAMPLE
M4 x -1 Clinch Nut Steel / Zinc Plated (CR3)

Flush Nuts

A1 / A2 Stainless Steel*



| Thread | M2.5 | | M3 | | M3 Alt | | M3.5 | | M4 | | M5 | | M6 | | Thread |
|-----------------------------|------|-----|------|-----|--------|-----|------|-----|------|-----|------|-----|------|------|-----------------------------|
| | -1 | -2 | -1 | -2 | -1 | -2 | -1 | -2 | -1 | -2 | -1 | -2 | -3 | (-4) | |
| H max | 1.5 | 2.3 | 1.5 | 2.3 | 1.5 | 2.3 | 1.5 | 2.3 | 1.5 | 2.3 | 1.5 | 2.3 | 3.1 | 3.9 | H max |
| Min. Rec. sheet thickness | 1.5 | 2.4 | 1.5 | 2.4 | 1.5 | 2.4 | 1.5 | 2.4 | 1.5 | 2.4 | 1.5 | 2.4 | 3.2 | 4.0 | Min. Rec. sheet thickness |
| D Max | 4.35 | | 4.35 | | 5.35 | | 5.35 | | 7.35 | | 7.85 | | 8.70 | | D Max |
| S Width A/F Nom | 4.80 | | 4.80 | | 6.40 | | 6.40 | | 7.90 | | 8.70 | | 9.50 | | S Width A/F Nom |
| Hole Size +0.08 -0.00 | 4.40 | | 4.40 | | 5.40 | | 5.40 | | 7.40 | | 7.90 | | 8.75 | | Hole Size +0.08 -0.00 |
| Min. distance to sheet edge | 6.00 | | 6.0 | | 6.50 | | 6.50 | | 7.20 | | 8.00 | | 8.80 | | Min. distance to sheet edge |

| CODE |  Scan the QR Code to view technical drawings for this product range https://www.lancasterfastener.com/drawings-for-hcfna2 | | | | | | | | | | | | | | CODE | |
|------|---|--|---|--|---|--|--|--|--|---|--|---|---|--|------|------|
| -1 | ● | | ● | | ● | | | | | ● | | ● | | | | -1 |
| -2 | | | ● | | ● | | | | | ● | | ● | | | | -2 |
| -3 | | | | | | | | | | | | | ● | | | -3 |
| (-4) | | | | | | | | | | | | | | | | (-4) |
| - | | | | | | | | | | | | | | | | - |

● A1 / A2 Stainless Steel - preferred and available from stock.

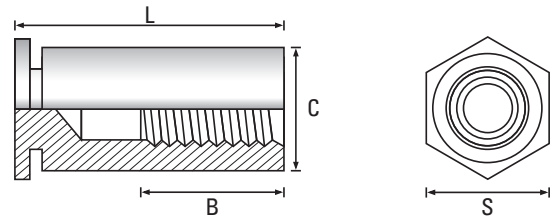
*Grade depends on the method of manufacturer.


PRODUCT CODE EXAMPLE
HCFN04-2SS

PRODUCT DESCRIPTION EXAMPLE
M4 x -2 Clinch Flush Nut A2 Stainless Steel

Blind Stand Offs

Steel / Zinc Plated (CR3)



| Thread | M3 | M3 Alt | M4 | M5 | Thread |
|-----------------------------------|---|--------|------|------|-----------------------------------|
| C +0.00 -0.13 | 4.18 | 5.39 | 7.10 | 7.10 | C +0.00 -0.13 |
| S Width A/F Nom | 4.8 | 6.4 | 7.9 | 7.9 | S Width A/F Nom |
| Hole Size +0.08 -0.00 | 4.2 | 5.4 | 7.2 | 7.2 | Hole Size +0.08 -0.00 |
| Min. distance to sheet edge | 6.0 | 6.8 | 8.0 | 8.0 | Min. distance to sheet edge |
| Min. Rec. sheet thickness | 1.0 | 1.0 | 1.3 | 1.3 | Min. Rec. sheet thickness |
| B Dimension (nom) |  <p>Scan the QR Code to view technical drawings for this product range https://www.lancasterfastener.com/drawings-hcbsostzc</p> | | | | LENGTH ±0.2 |
| N/A | ● | ● | ● | | 6 |
| 4 | ● | ● | ● | ● | 8 |
| | | ● | ● | ● | 10 |
| 5 | ● | ● | ● | ● | 12 |
| 6.5 | ● | ● | ● | ● | 14 |
| | ● | ● | ● | ● | 16 |
| 9.5 | ● | ● | ● | | 18 |
| | ● | ● | ● | ● | 20 |
| | ● | ● | ● | ● | 22 |
| | ● | ● | ● | ● | 25 |

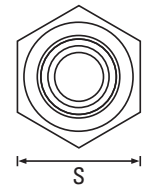
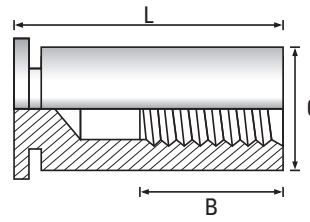
● Steel / Zinc Plated (CR3) - preferred and available from stock.

PRODUCT CODE EXAMPLE
HCBS003016STZC

PRODUCT DESCRIPTION EXAMPLE
M3 x 16 Clinch Blind Stand Off Steel / Zinc Plated (CR3)

Blind Stand Offs

A1 Stainless Steel



| Thread | M3 | M3 Alt | M4 | M5 | Thread |
|-----------------------------------|------|--------|------|------|-----------------------------------|
| C +0.00 -0.13 | 4.18 | 5.39 | 7.10 | 7.10 | C +0.00 -0.13 |
| S Width A/F Nom | 4.8 | 6.4 | 7.9 | 7.9 | S Width A/F Nom |
| Hole Size +0.08 -0.00 | 4.2 | 5.4 | 7.2 | 7.2 | Hole Size +0.08 -0.00 |
| Min. distance to sheet edge | 6.0 | 6.8 | 8.0 | 8.0 | Min. distance to sheet edge |
| Min. Rec. sheet thickness | 1.0 | 1.0 | 1.3 | 1.3 | Min. Rec. sheet thickness |



Scan the QR Code to view technical drawings for this product range
<https://www.lancasterfastener.com/drawings-for-hcbsoa2>

| B Dimension (nom) | Scan the QR Code to view technical drawings for this product range https://www.lancasterfastener.com/drawings-for-hcbsoa2 | | | | LENGTH ±0.2 |
|-------------------------|---|---|---|---|----------------|
| N/A | ● | ● | ● | | 6 |
| 4 | | ● | ● | | 8 |
| | | ● | ● | | 10 |
| 5 | ● | ● | ● | ● | 12 |
| 6.5 | ● | | ● | | 14 |
| | ● | | ● | | 16 |
| 9.5 | | ● | ● | | 18 |
| | | | ● | | 20 |
| | ● | | ● | | 22 |
| | | | ● | | 25 |

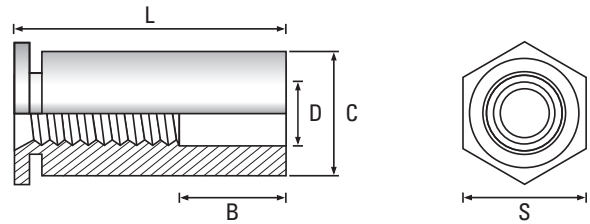
● A1 Stainless Steel - preferred and available from stock.


PRODUCT CODE EXAMPLE
 HCBS004020A2

PRODUCT DESCRIPTION EXAMPLE
 M4 x 20 Clinch Blind Stand Off A1 Stainless Steel

Through Stand Offs

Steel / Zinc Plated (CR3)



| Thread | M2.5 | M3 | M3 Alt | M4 | M5 | Thread |
|-----------------------------------|---|------|--------|------|------|-----------------------------------|
| C +0.00 -0.13 | 4.18 | 4.18 | 5.39 | 7.10 | 7.10 | C +0.00 -0.13 |
| D | 3.2 | 3.2 | 3.2 | 4.8 | 5.2 | D |
| S Width A/F Nom | 4.8 | 4.8 | 6.4 | 7.9 | 7.9 | S Width A/F Nom |
| Hole Size +0.08 -0.00 | 4.2 | 4.2 | 5.4 | 7.2 | 7.2 | Hole Size +0.08 -0.00 |
| Min. distance to sheet edge | 6.0 | 6.0 | 6.8 | 8.0 | 8.0 | Min. distance to sheet edge |
| Min. Rec. sheet thickness | 1.0 | 1.0 | 1.0 | 1.3 | 1.3 | Min. Rec. sheet thickness |
| B Dimension (nom) |  <p>Scan the QR Code to view technical drawings for this product range https://www.lancasterfastener.com/drawings-hcsostzc</p> | | | | | LENGTH ±0.2 |
| N/A | | | | ● | | 3 |
| | | ● | ● | ● | | 4 |
| | | ● | ● | | | 5 |
| | | ● | ● | ● | ● | 6 |
| | | ● | ● | ● | ● | 8 |
| 4 | | ● | ● | | ● | 10 |
| | | ● | | ● | ● | 12 |
| | | ● | ● | ● | ● | 14 |
| 8 | | | ● | ● | ● | 16 |
| | | | | | ● | 18 |
| | | | | ● | | 20 |
| 11 | | | | | ● | 22 |
| | | | | | ● | 25 |

● Steel / Zinc Plated (CR3) - preferred and available from stock.

PRODUCT CODE EXAMPLE
HCS004006STZC

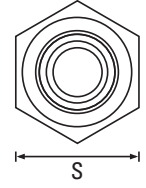
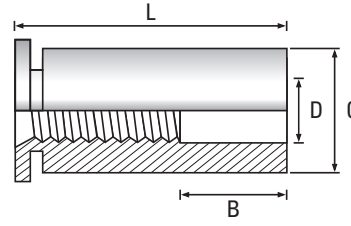
PRODUCT DESCRIPTION EXAMPLE
M4 x 6 Clinch Through Stand Off Steel / Zinc Plated (CR3)

Self-Clinching Fasteners

Fasteners for Sheet Metal Applications

Through Stand Offs

A1 Stainless Steel



| Thread | M2.5 | M3 | M3 Alt | M4 | M5 | Thread |
|-----------------------------------|------|------|--------|------|------|-----------------------------------|
| C +0.00 -0.13 | 4.18 | 4.18 | 5.39 | 7.10 | 7.10 | C +0.00 -0.13 |
| D | 3.2 | 3.2 | 3.2 | 4.8 | 5.2 | D |
| S Width A/F Nom | 4.8 | 4.8 | 6.4 | 7.9 | 7.9 | S Width A/F Nom |
| Hole Size +0.08 -0.00 | 4.2 | 4.2 | 5.4 | 7.2 | 7.2 | Hole Size +0.08 -0.00 |
| Min. distance to sheet edge | 6.0 | 6.0 | 6.8 | 8.0 | 8.0 | Min. distance to sheet edge |
| Min. Rec. sheet thickness | 1.0 | 1.0 | 1.0 | 1.3 | 1.3 | Min. Rec. sheet thickness |



Scan the QR Code to view technical drawings for this product range
<https://www.lancasterfastener.com/drawings-for-hcsoa2>

| B Dimension (nom) | Scan the QR Code to view technical drawings for this product range https://www.lancasterfastener.com/drawings-for-hcsoa2 | | | | LENGTH ±0.2 |
|-------------------------|---|---|---|--|----------------|
| N/A | ● | ● | | | 3 |
| | ● | | | | 4 |
| | | | | | 5 |
| | ● | ● | | | 6 |
| | ● | ● | ● | | 8 |
| 4 | ● | ● | ● | | 10 |
| | ● | ● | ● | | 12 |
| | ● | | | | 14 |
| 8 | ● | ● | | | 16 |
| | ● | | | | 18 |
| 11 | | | ● | | 20 |
| | | | | | 22 |
| | | | | | 25 |

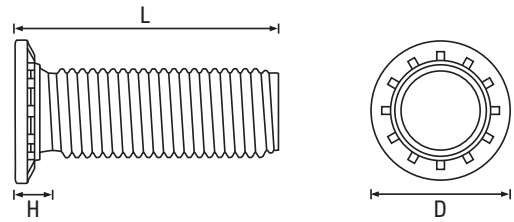
● A1 Stainless Steel - preferred and available from stock.

PRODUCT CODE EXAMPLE
HCSO03012A2

PRODUCT DESCRIPTION EXAMPLE
M3 x 12 Clinch Through Stand Off A1 Stainless Steel

Flush Head Studs

Steel / Zinc Plated (CR3)



| Thread | M2.5 | M3 | M4 | M5 | M6 | M8 | Thread |
|-----------------------------------|------|------|------|------|------|------|-----------------------------------|
| D ±0.4 | 4.10 | 4.60 | 5.90 | 6.50 | 8.20 | 9.60 | D ±0.4 |
| H Max | 1.95 | 2.10 | 2.40 | 2.70 | 3.00 | 3.70 | H Max |
| Hole Size +0.08 -0.00 | 2.5 | 3.0 | 4.0 | 5.0 | 6.0 | 8.0 | Hole Size +0.08 -0.00 |
| Min. distance to sheet edge | 5.4 | 5.6 | 7.2 | 7.2 | 7.9 | 9.0 | Min. distance to sheet edge |
| Min. Rec. sheet thickness | 1.0 | 1.0 | 1.0 | 1.0 | 1.6 | 2.4 | Min. Rec. sheet thickness |



Scan the QR Code to view technical drawings for this product range
<https://www.lancasterfastener.com/drawings-hcsstzc>

| LENGTH ±0.2 | Scan the QR Code to view technical drawings for this product range https://www.lancasterfastener.com/drawings-hcsstzc | | | | | | LENGTH ±0.2 |
|----------------|---|---|---|---|---|---|----------------|
| 6 | ● | ● | ● | | | | 6 |
| 8 | | ● | ● | ● | | | 8 |
| 10 | ● | ● | ● | ● | ● | | 10 |
| 12 | ● | ● | ● | ● | ● | | 12 |
| 15 | ● | ● | ● | ● | ● | ● | 15 |
| 16 | | ● | ● | ● | ● | ● | 16 |
| 18 | ● | ● | ● | ● | ● | ● | 18 |
| 20 | | ● | ● | ● | ● | ● | 20 |
| 22 | | ● | | | | | 22 |
| 25 | | ● | ● | ● | ● | ● | 25 |
| 30 | | ● | ● | ● | ● | ● | 30 |
| 35 | | ● | ● | | ● | ● | 35 |
| 38 | | | | | ● | | 38 |
| 40 | | | | | | ● | 40 |

● Steel / Zinc Plated (CR3) - preferred and available from stock.

PRODUCT CODE EXAMPLE
HCS03010STZC

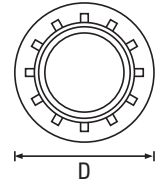
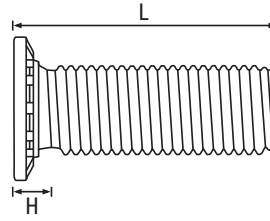
PRODUCT DESCRIPTION EXAMPLE
M3 x 10 Flush Head Clinch Stud Steel / Zinc Plated (CR3)

Self-Clinching Fasteners


Fasteners for Sheet Metal Applications

Flush Head Studs

A2 Stainless Steel



| Thread | M2.5 | M3 | M4 | M5 | M6 | M8 | Thread |
|-----------------------------------|------|------|------|------|------|------|-----------------------------------|
| D ±0.4 | 4.10 | 4.60 | 5.90 | 6.50 | 8.20 | 9.60 | D ±0.4 |
| H Max | 1.95 | 2.10 | 2.40 | 2.70 | 3.00 | 3.70 | H Max |
| Hole Size +0.08 -0.00 | 2.5 | 3.0 | 4.0 | 5.0 | 6.0 | 8.0 | Hole Size +0.08 -0.00 |
| Min. distance to sheet edge | 5.4 | 5.6 | 7.2 | 7.2 | 7.9 | 9.0 | Min. distance to sheet edge |
| Min. Rec. sheet thickness | 1.0 | 1.0 | 1.0 | 1.0 | 1.6 | 2.4 | Min. Rec. sheet thickness |

| LENGTH ±0.2 |  <p>Scan the QR Code to view technical drawings for this product range https://www.lancasterfastener.com/drawings-for-hcsa2</p> | | | | | | LENGTH ±0.2 |
|----------------|--|---|---|---|---|---|----------------|
| 6 | | ● | ● | | | | 6 |
| 8 | | ● | ● | | | | 8 |
| 10 | | ● | ● | ● | ● | | 10 |
| 12 | | ● | ● | ● | ● | | 12 |
| 15 | | ● | ● | ● | ● | | 15 |
| 16 | | | ● | ● | ● | ● | 16 |
| 18 | | ● | ● | ● | ● | | 18 |
| 20 | | ● | ● | ● | ● | ● | 20 |
| 22 | | | | | | | 22 |
| 25 | | ● | ● | ● | ● | ● | 25 |
| 30 | | ● | | ● | ● | ● | 30 |
| 35 | | | | | | | 35 |

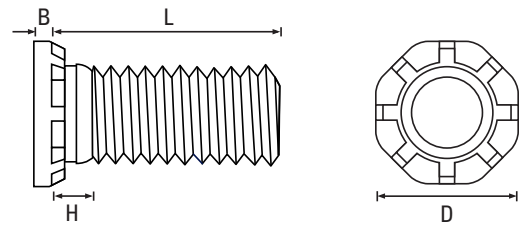
● A2 Stainless Steel - preferred and available from stock.

PRODUCT CODE EXAMPLE
HCS06016A2

PRODUCT DESCRIPTION EXAMPLE
M6 x 16 Flush Head Clinch Stud A2 Stainless Steel

Non Flush Head High Strength Studs

Steel / Zinc Plated (CR3)



| Thread | - | - | - | M8 | M10 | - | Thread |
|-----------------------------|---|---|---|-------|-------|---|-----------------------------|
| D ±0.4 | - | - | - | 12.50 | 15.70 | - | D ±0.4 |
| H Max | - | - | - | 3.50 | 2.10 | - | H Max |
| B Max | - | - | - | 1.78 | 2.30 | - | B Max |
| Hole Size +0.13 -0.00 | - | - | - | 8.0 | 10.0 | - | Hole Size +0.13 -0.00 |
| Min. distance to sheet edge | - | - | - | 12.7 | 13.7 | - | Min. distance to sheet edge |
| Min. Rec. sheet thickness | - | - | - | 2.0 | 2.4 | - | Min. Rec. sheet thickness |



Scan the QR Code to view technical drawings for this product range
<https://www.lancasterfastener.com/drawings-hcsstzc-hs>

| LENGTH ±0.2 | | | | | | LENGTH ±0.2 |
|----------------|--|--|--|---|---|----------------|
| 10 | | | | | | 10 |
| 12 | | | | | | 12 |
| 15 | | | | | | 15 |
| 16 | | | | | | 16 |
| 20 | | | | ● | ● | 20 |
| 25 | | | | ● | ● | 25 |
| 30 | | | | ● | ● | 30 |
| 35 | | | | ● | ● | 35 |
| 40 | | | | | ● | 40 |
| 45 | | | | | | 45 |
| 50 | | | | | ● | 50 |
| - | | | | | | - |

● Steel / Zinc Plated (CR3) - preferred and available from stock.

PRODUCT CODE EXAMPLE
HCS99020STZC-HS

PRODUCT DESCRIPTION EXAMPLE
M10 x 20 Non Flush Head High Strength Clinch Stud Steel / Zinc Plated (CR3)

Screws for Plastics
 ISO & DIN 7500 Tap-Fix® Screws
 Machine Screws
 Self-Tapping Screws
 Self-Drilling Screws
 Micro Diameter Screws
 Hammer Drive Screws
 K-Series® Setzmuttern
 Rivet Bushes
 Self-Clinching Fasteners
 CD Weld Studs
 Brass Inserts for Plastics