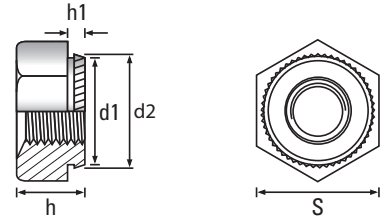


Standard Spigot

Steel / Zinc Plated (CR3)



Thread	M2.5	M3	M4	M5	M6	M8	M10	M12	M16	M20	Thread
h1 Spigot Length	0.90	0.90	0.90	0.90	0.90	1.80	1.80	2.80	2.40	3.90	h1 Spigot Length
h Height	3.00	3.00	3.20	4.00	5.00	6.50	8.00	10.00	13.00	16.00	h Height
d1	4.50	4.50	5.50	6.50	8.00	10.00	12.50	14.50	18.50	23.00	d1
d2	4.70	4.70	5.70	6.75	8.30	10.30	12.85	14.85	18.85	23.40	d2
S Width A/F	5.50	5.50	7.00	8.00	10.00	13.00	15.00	17.00	22.00	27.00	S Width A/F



Scan the QR Code to view technical drawings for this product range
<https://www.lancasterfastener.com/drawings-for-kpnstzc-standard>

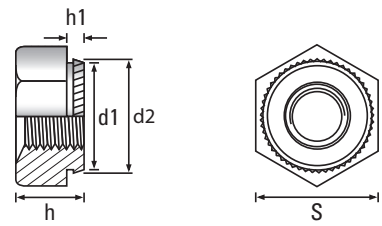
Material Thickness mm											Material Thickness mm
1	●	●	●	●	●						1
1.5											1.5
2						●	●				2
3								●	●		3
4										●	4
-											-
-											-
-											-
-											-
-											-
-											-
-											-

● Steel / Zinc Plated (CR3) - preferred and available from stock.

PRODUCT CODE EXAMPLE	PRODUCT DESCRIPTION EXAMPLE
KPN06010STZC	M6 Standard Spigot K-Series® Setzmuttern Steel / Zinc Plated (CR3)

Standard Spigot

A2 Stainless Steel



Thread	M2.5	M3	M4	M5	M6	M8	M10	M12	M16	M20	Thread
h1 Spigot Length	0.90	0.90	0.90	0.90	0.90	1.80	1.80	2.80	2.40	3.90	h1 Spigot Length
h Height	3.00	3.00	3.20	4.00	5.00	6.50	8.00	10.00	13.00	16.00	h Height
d1	4.50	4.50	5.50	6.50	8.00	10.00	12.50	14.50	18.50	23.00	d1
d2	4.70	4.70	5.70	6.75	8.30	10.30	12.85	14.85	18.85	23.40	d2
S Width A/F	5.50	5.50	7.00	8.00	10.00	13.00	15.00	17.00	22.00	27.00	S Width A/F



Scan the QR Code to view technical drawings for this product range
<https://www.lancasterfastener.com/drawings-for-kpnstandarda2>

Material Thickness mm											Material Thickness mm
1			●	●	●						1
1.5											1.5
2						●	●				2
3								●			3
4											4
-											-
-											-
-											-
-											-
-											-
-											-

● A2 Stainless Steel - preferred and available from stock.

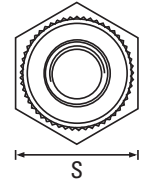
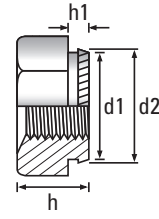
PRODUCT CODE EXAMPLE
KPN04010A2

PRODUCT DESCRIPTION EXAMPLE
M4 Standard Spigot K-Series® Setzmuttern A2 Stainless Steel

Screws for Plastics
 ISO & DIN 7500 Tap-Fix® Screws
 Machine Screws
 Self-Tapping Screws
 Self-Drilling Screws
 Micro Diameter Screws
 Hammer Drive Screws
 K-Series® Setzmuttern
 Rivet Bushes
 Self-Clinching Fasteners
 CD Weld Studs
 Brass Inserts for Plastics

Intermediate Spigot

Steel / Zinc Plated (CR3)



Thread	M2.5	M3	M4	M5	M6	M8	M10	M12	M16	M20	Thread
h1 Spigot Length	1.40	1.40	1.40	1.40	1.40	-	-	-	-	-	h1 Spigot Length
h Height	3.00	3.00	3.20	4.00	5.00	-	-	-	-	-	h Height
d1	4.50	4.50	5.50	6.50	8.00	-	-	-	-	-	d1
d2	4.70	4.70	5.70	6.75	8.30	-	-	-	-	-	d2
S Width A/F	5.50	5.50	7.00	8.00	10.00	-	-	-	-	-	S Width A/F



Scan the QR Code to view technical drawings for this product range
<https://www.lancasterfastener.com/drawings-for-kpnstzc-intermediate>

Material Thickness mm											Material Thickness mm
1											1
1.5	●	●	●	●	●						1.5
2											2
3											3
4											4
-											-
-											-
-											-
-											-
-											-
-											-
-											-

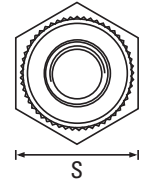
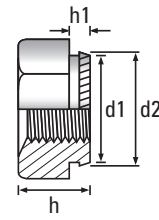
● Steel / Zinc Plated (CR3) - preferred and available from stock.

PRODUCT CODE EXAMPLE
KPN03015STZC

PRODUCT DESCRIPTION EXAMPLE
M3 Intermediate Spigot K-Series® Setzmuttern Steel / Zinc Plated (CR3)

Intermediate Spigot

A2 Stainless Steel



Thread	M2.5	M3	M4	M5	M6	M8	M10	M12	M16	M20	Thread
h1 Spigot Length	1.40	1.40	1.40	1.40	1.40	-	-	-	-	-	h1 Spigot Length
h Height	3.00	3.00	3.20	4.00	5.00	-	-	-	-	-	h Height
d1	4.50	4.50	5.50	6.50	8.00	-	-	-	-	-	d1
d2	4.70	4.70	5.70	6.75	8.30	-	-	-	-	-	d2
S Width A/F	5.50	5.50	7.00	8.00	10.00	-	-	-	-	-	S Width A/F



Scan the QR Code to view technical drawings for this product range
<https://www.lancasterfastener.com/drawings-for-kpnintermediatea2>

Material Thickness mm											Material Thickness mm
1											1
1.5			●	●	●						1.5
2											2
3											3
4											4
-											-
-											-
-											-
-											-
-											-
-											-
-											-

● A2 Stainless Steel - preferred and available from stock.

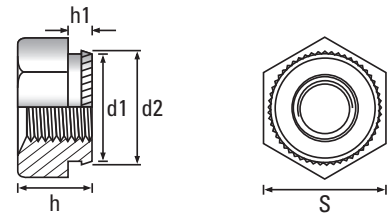
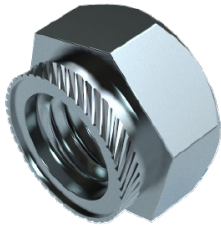
PRODUCT CODE EXAMPLE
KPN05015A2

PRODUCT DESCRIPTION EXAMPLE
M5 Intermediate Spigot K-Series® Setzmuttern A2 Stainless Steel


Screws for Plastics
 ISO & DIN 7500 Tap-Fix® Screws
 Machine Screws
 Self-Tapping Screws
 Self-Drilling Screws
 Micro Diameter Screws
 Hammer Drive Screws
 K-Series® Setzmuttern
 Rivet Bushes
 Self-Clinching Fasteners
 CD Weld Studs
 Brass Inserts for Plastics

Long Spigot

Steel / Zinc Plated (CR3)



Thread	M2.5	M3	M4	M5	M6	M8	M10	M12	M16	M20	Thread
h1 Spigot Length	1.80	1.80	1.80	1.80	1.80	-	-	-	-	-	h1 Spigot Length
h Height	3.00	3.00	4.50	5.00	5.00	-	-	-	-	-	h Height
d1	4.50	4.50	5.50	6.50	8.00	-	-	-	-	-	d1
d2	4.70	4.70	5.70	6.75	8.30	-	-	-	-	-	d2
S Width A/F	5.50	5.50	7.00	8.00	10.00	-	-	-	-	-	S Width A/F

Material Thickness mm		Scan the QR Code to view technical drawings for this product range https://www.lancasterfastener.com/drawings-for-kpnstzc-long	Material Thickness mm
-----------------------	--	---	-----------------------

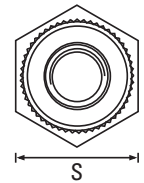
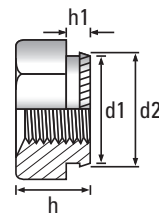
1												1
1.5												1.5
2	●	●	●	●	●							2
3												3
4												4
-												-
-												-
-												-
-												-
-												-
-												-
-												-

● Steel / Zinc Plated (CR3) - preferred and available from stock.

PRODUCT CODE EXAMPLE	PRODUCT DESCRIPTION EXAMPLE
KPN03020STZC	M3 Long Spigot K-Series® Setzmuttern Steel / Zinc Plated (CR3)

Long Spigot

A2 Stainless Steel



Thread	M2.5	M3	M4	M5	M6	M8	M10	M12	M16	M20	Thread
h1 Spigot Length	1.80	1.80	1.80	1.80	1.80	-	-	-	-	-	h1 Spigot Length
h Height	3.00	3.00	4.50	5.00	5.00	-	-	-	-	-	h Height
d1	4.50	4.50	5.50	6.50	8.00	-	-	-	-	-	d1
d2	4.70	4.70	5.70	6.75	8.30	-	-	-	-	-	d2
S Width A/F	5.50	5.50	7.00	8.00	10.00	-	-	-	-	-	S Width A/F



Scan the QR Code to view technical drawings for this product range
<https://www.lancasterfastener.com/drawings-for-kpnlonga2>

Material Thickness mm											Material Thickness mm
1											1
1.5											1.5
2			●	●	●						2
3											3
4											4
-											-
-											-
-											-
-											-
-											-
-											-

● A2 Stainless Steel - preferred and available from stock.

PRODUCT CODE EXAMPLE
KPN06020A2

PRODUCT DESCRIPTION EXAMPLE
M6 Long Spigot K-Series® Setzmuttern A2 Stainless Steel

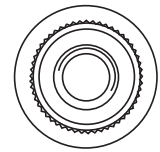
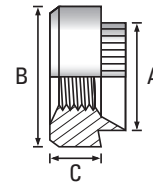
Screws for Plastics
 ISO & DIN 7500 Tap-Fix® Screws
 Machine Screws
 Self-Tapping Screws
 Self-Drilling Screws
 Micro Diameter Screws
 Hammer Drive Screws
 K-Series® Setzmuttern
 Rivet Bushes
 Self-Clinching Fasteners
 CD Weld Studs
 Brass Inserts for Plastics

Rivet Bushes


Fasteners for Sheet Metal Applications

Round

Steel / Zinc Plated (CR3)



Thread	M2.5	M3	M3.5	M4	M5	M6	M8	M10	M12	Thread
A Dia. of spigot +0.00 -0.13	5.54	5.54	6.73	6.73	7.92	9.52	12.70	15.87	19.05	A Dia. of spigot +0.00 -0.13
B Dia. of body ±0.15	7.92	7.92	9.52	9.52	11.10	12.70	15.87	19.05	25.40	B Dia. of body ±0.15
C Depth of body ±0.13	3.17	3.17	3.17	3.17	3.81	5.08	6.35	7.62	10.16	C Depth of body ±0.13
Recom. Hole Size +0.05 -0.00	5.54	5.54	6.73	6.73	7.92	9.52	12.70	15.87	19.05	Recom. Hole Size +0.05 -0.00

GAUGE		Scan the QR Code to view technical drawings for this product range https://www.lancasterfastener.com/drawings-hcrrbstzc	GAUGE
-------	--	---	-------

10 swg	●				●	●	●	●		10 swg
12 swg		●		●	●	●	●	●		12 swg
14 swg				●	●	●	●	●		14 swg
16 swg		●		●	●	●	●	●		16 swg
18 swg		●		●	●	●	●	●		18 swg
20 swg		●		●	●	●	●			20 swg
-										-
-										-
-										-
-										-

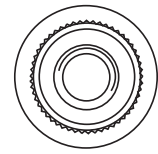
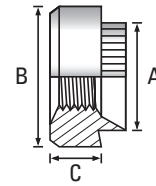
● Steel / Zinc Plated (CR3) - preferred and available from stock.

PRODUCT CODE EXAMPLE
HCRRB04020STZC

PRODUCT DESCRIPTION EXAMPLE
M4 x 20 swg Round Rivet Bush Steel / Zinc Plated (CR3)

Round

Steel / Self Colour



Thread	M2.5	M3	M3.5	M4	M5	M6	M8	M10	M12	Thread
A Dia. of spigot +0.00 -0.13	5.54	5.54	6.73	6.73	7.92	9.52	12.70	15.87	19.05	A Dia. of spigot +0.00 -0.13
B Dia. of body ±0.15	7.92	7.92	9.52	9.52	11.10	12.70	15.87	19.05	25.40	B Dia. of body ±0.15
C Depth of body ±0.13	3.17	3.17	3.17	3.17	3.81	5.08	6.35	7.62	10.16	C Depth of body ±0.13
Recom. Hole Size +0.05 -0.00	5.54	5.54	6.73	6.73	7.92	9.52	12.70	15.87	19.05	Recom. Hole Size +0.05 -0.00



Scan the QR Code to view technical drawings for this product range
<https://www.lancasterfastener.com/drawings-hcrrbstsc>

GAUGE										GAUGE
10 swg					●	●	●	●		10 swg
12 swg						●	●			12 swg
14 swg				●		●	●	●	●	14 swg
16 swg					●	●	●			16 swg
18 swg				●		●	●	●		18 swg
20 swg						●				20 swg
-										-
-										-
-										-
-										-

● Steel / Self Colour - preferred and available from stock.

PRODUCT CODE EXAMPLE
HCRRB06010STSC

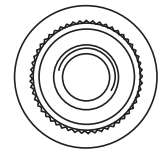
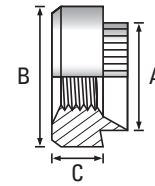
PRODUCT DESCRIPTION EXAMPLE
M6 x 10 swg Round Rivet Bush Steel / Self Colour

Rivet Bushes

Fasteners for Sheet Metal Applications

Round

A2 Stainless Steel



Thread	M2.5	M3	M3.5	M4	M5	M6	M8	M10	M12	Thread
A Dia. of spigot +0.00 -0.13	5.54	5.54	6.73	6.73	7.92	9.52	12.70	15.87	19.05	A Dia. of spigot +0.00 -0.13
B Dia. of body ±0.15	7.92	7.92	9.52	9.52	11.10	12.70	15.87	19.05	25.40	B Dia. of body ±0.15
C Depth of body ±0.13	3.17	3.17	3.17	3.17	3.81	5.08	6.35	7.62	10.16	C Depth of body ±0.13
Recom. Hole Size +0.05 -0.00	5.54	5.54	6.73	6.73	7.92	9.52	12.70	15.87	19.05	Recom. Hole Size +0.05 -0.00

GAUGE



Scan the QR Code to view technical drawings for this product range
<https://www.lancasterfastener.com/drawings-for-hcrrba2>

GAUGE

10 swg				●	●	●	●			10 swg
12 swg				●	●	●	●			12 swg
14 swg		●		●	●		●			14 swg
16 swg		●		●	●	●	●			16 swg
18 swg		●		●	●	●				18 swg
20 swg					●	●				20 swg
-										-
-										-
-										-
-										-

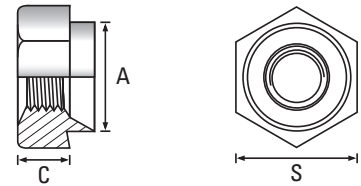
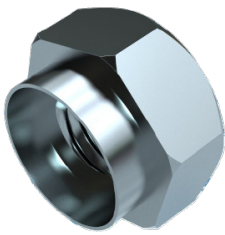
● A2 Stainless Steel - preferred and available from stock.

PRODUCT CODE EXAMPLE
 HCRRB05012A2

PRODUCT DESCRIPTION EXAMPLE
 M5 x 12 swg Round Rivet Bush A2 Stainless Steel

Hexagon

Steel / Zinc Plated (CR3)



Thread	M2.5	M3	M3.5	M4	M5	M6	M8	M10	M12	Thread
A Dia. of spigot +0.00 -0.13	5.54	5.54	6.73	6.73	7.92	9.52	12.70	15.87	19.05	A Dia. of spigot +0.00 -0.13
S Width A/F ±0.15	7.92	7.92	7.92	7.92	9.52	11.10	14.27	19.05	22.22	S Width A/F ±0.15
C Depth of body ±0.13	3.17	3.17	3.17	3.17	3.81	5.08	6.35	7.62	10.16	C Depth of body ±0.13
Recom. Hole Size +0.05 -0.00	5.54	5.54	6.73	6.73	7.92	9.52	12.70	15.87	19.05	Recom. Hole Size +0.05 -0.00



Scan the QR Code to view technical drawings for this product range
<https://www.lancasterfastener.com/drawings-hchrbstzc>

GAUGE										GAUGE
10 swg				●	●	●	●	●	●	10 swg
12 swg					●	●	●	●		12 swg
14 swg		●		●	●	●	●	●	●	14 swg
16 swg				●	●	●	●	●	●	16 swg
18 swg		●		●	●	●	●			18 swg
20 swg				●	●	●	●	●		20 swg
-										-
-										-
-										-
-										-

● Steel / Zinc Plated (CR3) - preferred and available from stock.

PRODUCT CODE EXAMPLE
HCHRBO3014STZC

PRODUCT DESCRIPTION EXAMPLE
M3 x 14 swg Hexagon Rivet Bush Steel / Zinc Plated (CR3)

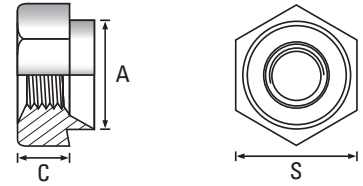
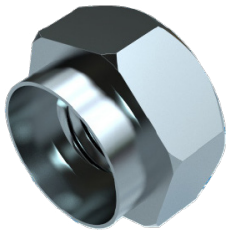
Screws for Plastics
 ISO & DIN 7500 Tap-Fix® Screws
 Machine Screws
 Self-Tapping Screws
 Self-Drilling Screws
 Micro Diameter Screws
 Hammer Drive Screws
 K-Series® Setzmuttern
 Rivet Bushes
 Self-Clinching Fasteners
 CD Weld Studs
 Brass Inserts for Plastics

Rivet Bushes

Fasteners for Sheet Metal Applications

Hexagon

Steel / Self Colour



Thread	M2.5	M3	M3.5	M4	M5	M6	M8	M10	M12	Thread
A Dia. of spigot +0.00 -0.13	5.54	5.54	6.73	6.73	7.92	9.52	12.70	15.87	19.05	A Dia. of spigot +0.00 -0.13
S Width A/F ±0.15	7.92	7.92	7.92	7.92	9.52	11.10	14.27	19.05	22.22	S Width A/F ±0.15
C Depth of body ±0.13	3.17	3.17	3.17	3.17	3.81	5.08	6.35	7.62	10.16	C Depth of body ±0.13
Recom. Hole Size +0.05 -0.00	5.54	5.54	6.73	6.73	7.92	9.52	12.70	15.87	19.05	Recom. Hole Size +0.05 -0.00

GAUGE



Scan the QR Code to view technical drawings for this product range
<https://www.lancasterfastener.com/drawings-hchrbtsc>

GAUGE

10 swg				●		●	●	●	●	10 swg
12 swg					●	●	●	●		12 swg
14 swg				●	●	●	●		●	14 swg
16 swg				●	●	●	●	●	●	16 swg
18 swg					●	●	●	●		18 swg
20 swg				●		●	●	●		20 swg
-										-
-										-
-										-
-										-

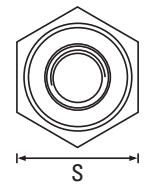
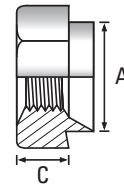
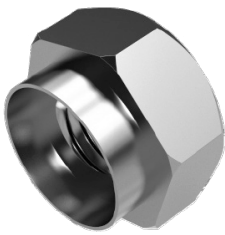
● Steel / Self Colour - preferred and available from stock.

PRODUCT CODE EXAMPLE
HCHRB06020STSC

PRODUCT DESCRIPTION EXAMPLE
M6 x 20 swg Hexagon Rivet Bush Steel / Self Colour

Hexagon

A1 / A2 Stainless Steel*



Thread	M2.5	M3	M3.5	M4	M5	M6	M8	M10	M12	Thread
A Dia. of spigot +0.00 -0.13	5.54	5.54	6.73	6.73	7.92	9.52	12.70	15.87	19.05	A Dia. of spigot +0.00 -0.13
S Width A/F ±0.15	7.92	7.92	7.92	7.92	9.52	11.10	14.27	19.05	22.22	S Width A/F ±0.15
C Depth of body ±0.13	3.17	3.17	3.17	3.17	3.81	5.08	6.35	7.62	10.16	C Depth of body ±0.13
Recom. Hole Size +0.05 -0.00	5.54	5.54	6.73	6.73	7.92	9.52	12.70	15.87	19.05	Recom. Hole Size +0.05 -0.00



Scan the QR Code to view technical drawings for this product range
<https://www.lancasterfastener.com/drawings-for-hchrba2>

GAUGE										GAUGE
10 swg							●	●	●	10 swg
12 swg				●		●	●			12 swg
14 swg		●		●	●	●	●			14 swg
16 swg		●		●	●	●	●			16 swg
18 swg		●		●	●	●				18 swg
20 swg		●			●	●				20 swg
-										-
-										-
-										-
-										-

● A1 / A2 Stainless Steel - preferred and available from stock.

*Grade depends on the method of manufacturer.

PRODUCT CODE EXAMPLE
HCHR04018A2

PRODUCT DESCRIPTION EXAMPLE
M4 x 18 swg Hexagon Rivet Bush A2 Stainless Steel