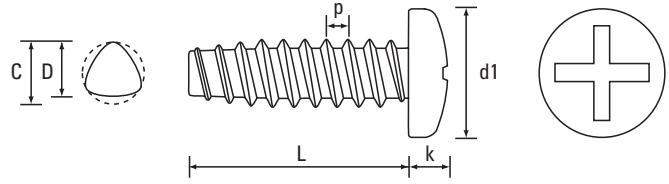
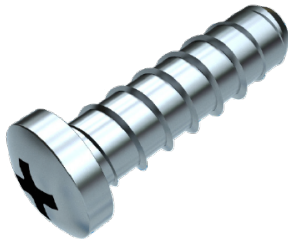


# JCIS Micro Diameter Screws

# Thread Rolling Screws for Plastic Applications

Cross Recess (H) Pan Type P

Steel / Zinc Plated (CR3)



Dia. D max	1.4			1.6			2.0			2.3			2.6			Dia. mm
Pitch	0.50			0.64			0.79			0.91			1.06			Pitch
Dia. C max	1.46			1.66			2.12			2.43			2.73			Dia. C max
Head Type	TYPE 1	TYPE 2	TYPE 3	TYPE 1	TYPE 2	TYPE 3	TYPE 1	TYPE 2	TYPE 3	TYPE 1	TYPE 2	TYPE 3	TYPE 1	TYPE 2	TYPE 3	Head Type
d1 - max	2.00	2.50	2.50	2.40	2.80	2.80	3.00	3.50	3.50	3.50	4.00	4.00	4.00	4.50	4.50	d1 - max
k - max	0.50	0.50	0.80	0.55	0.55	0.85	0.60	0.60	1.00	0.70	0.70	1.10	0.80	0.80	1.20	k - max
Recess	0			0			0			0			0			Recess



Scan the QR Code to view technical drawings for this product range  
<https://www.lancasterfastener.com/drawings-for-mi-jsp1hpanzc>

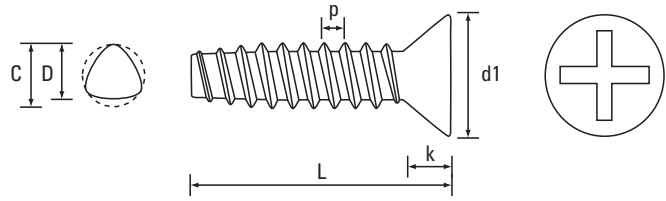
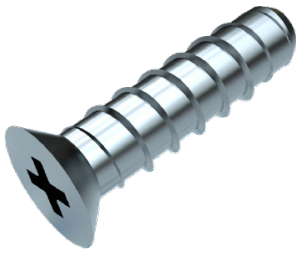
L - Length mm																L - Length mm	
3					●												3
4	●				●			●									4
5								●									5
6	●							●									6
8								●			●				●		8
10								●			●						10
12											●						12
-																	-
-																	-
-																	-
-																	-
-																	-
-																	-
-																	-
-																	-

● Steel / Zinc Plated (CR3) - preferred and available from stock.

PRODUCT CODE EXAMPLE	PRODUCT DESCRIPTION EXAMPLE
MI-JSP1HPAN16004ZC	1.6 x 4 Cross Recess (H) Pan Type 1 JCIS Type P Steel / Zinc Plated (CR3)

Cross Recess (H) Countersunk Type P

Steel / Zinc Plated (CR3)



Dia. D max	1.4		1.6		2.0		2.3		2.6		Dia. mm
Pitch	0.50		0.64		0.79		0.91		1.06		Pitch
Dia. C max	1.46		1.66		2.12		2.43		2.73		Dia. C max
Head Type	TYPE 1	TYPE 3	TYPE 1	TYPE 3	TYPE 1	TYPE 3	TYPE 1	TYPE 3	TYPE 1	TYPE 3	Head Type
d1 - max	2.00	2.50	2.40	2.80	3.00	3.50	3.50	4.00	4.00	4.50	d1 - max
k - ref	0.45	0.70	0.50	0.80	0.60	0.90	0.70	1.00	0.80	1.10	k - ref
Recess	0		0		0		0		0		Recess



Scan the QR Code to view technical drawings for this product range  
<https://www.lancasterfastener.com/drawings-for-mi-jsp1hcskzc>

L - Length mm											L - Length mm
3											3
4			●								4
5			●								5
6	●										6
8					●						8
10							●				10
12											12
-											-
-											-
-											-
-											-
-											-
-											-
-											-
-											-
-											-

● Steel / Zinc Plated (CR3) - preferred and available from stock.

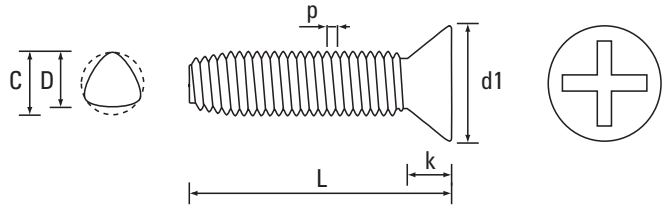
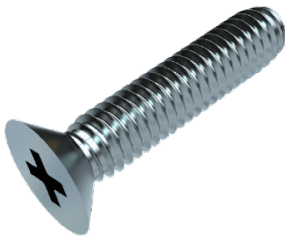
PRODUCT CODE EXAMPLE  
 MI-JSP1HCSK20008ZC

PRODUCT DESCRIPTION EXAMPLE  
 2.0 x 8 Cross Recess (H) Countersunk Type 1 JCIS Type P Steel / Zinc Plated (CR3)



Cross Recess (H) Countersunk Type S

Steel / Zinc Plated (CR3)



Dia. D max	M1.4		M1.6		M1.7		M2.0		M2.3		Dia. mm
Pitch	0.30		0.35		0.35		0.40		0.40		Pitch
Dia. C max	1.43		1.63		1.73		2.04		2.34		Dia. C max
Head Type	TYPE 1	TYPE 3	TYPE 1	TYPE 3	TYPE 1	TYPE 3	TYPE 1	TYPE 3	TYPE 1	TYPE 3	Head Type
d1 - max	2.00	2.50	2.40	2.80	2.50	3.00	3.00	3.50	3.50	4.00	d1 - max
k - ref	0.45	0.70	0.50	0.80	0.50	0.80	0.60	0.90	0.70	1.00	k - ref
Recess	0		0		0		0		0		Recess



Scan the QR Code to view technical drawings for this product range  
<https://www.lancasterfastener.com/drawings-for-mi-jss3hcskzc>

L - Length mm											L - Length mm
3											3
4					●			●			4
5					●						5
6		●			●						6
8								●			8
10								●			10
12											12
-											-
-											-
-											-
-											-
-											-
-											-
-											-
-											-
-											-

● Steel / Zinc Plated (CR3) - preferred and available from stock.

PRODUCT CODE EXAMPLE  
 MI-JSS3HCSK17006ZC

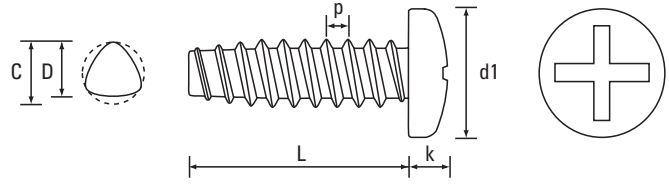
PRODUCT DESCRIPTION EXAMPLE  
 M1.7 x 6 Cross Recess (H) Countersunk Type 3 JCIS Type S Steel / Zinc Plated (CR3)

# JCIS Micro Diameter Screws

# Thread Rolling Screws for Plastic Applications

Cross Recess (H) Pan Type B

Steel / Black (CR3)



Dia. D max	1.4			1.6			1.7			2.0			2.3			2.6			Dia. mm
Pitch	0.45			0.50			0.50			0.64			0.79			0.91			Pitch
Dia. C max	1.43			1.63			1.73			2.04			2.34			2.64			Dia. C max
Head Type	TYPE 1	TYPE 2	TYPE 3	TYPE 1	TYPE 2	TYPE 3	TYPE 1	TYPE 2	TYPE 3	TYPE 1	TYPE 2	TYPE 3	TYPE 1	TYPE 2	TYPE 3	TYPE 1	TYPE 2	TYPE 3	Head Type
d1 - max	2.00	2.50	2.50	2.40	2.80	2.80	2.50	3.00	3.00	3.00	3.50	3.50	3.50	4.00	4.00	4.00	4.50	4.50	d1 - max
k - max	0.50	0.50	0.80	0.55	0.55	0.85	0.50	0.50	0.90	0.60	0.60	1.00	0.70	0.70	1.10	0.80	0.80	1.20	k - max
Recess	0			0			0			0			0			0			Recess



Scan the QR Code to view technical drawings for this product range  
<https://www.lancasterfastener.com/drawings-for-mi-jsb3hpanbl>

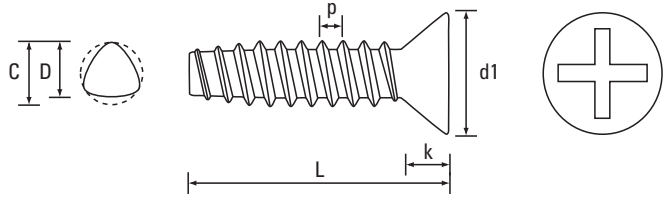
L - Length mm	Scan the QR Code to view technical drawings for this product range <a href="https://www.lancasterfastener.com/drawings-for-mi-jsb3hpanbl">https://www.lancasterfastener.com/drawings-for-mi-jsb3hpanbl</a>																		L - Length mm	
3				●																3
4							●							●						4
5				●						●				●						5
6							●			●				●						6
8							●							●						8
10														●					●	10
12																				12
-																				-
-																				-
-																				-
-																				-
-																				-
-																				-
-																				-
-																				-
-																				-

● Steel / Black Plated (CR3) - preferred and available from stock.

PRODUCT CODE EXAMPLE: MI-JSB3HPAN16003BL  
 PRODUCT DESCRIPTION EXAMPLE: 1.6 x 3 Cross Recess (H) Pan Type 3 JCIS Type B Steel / Black (CR3)

Cross Recess (H) Countersunk Type B

Steel / Black (CR3)



Dia. D max	1.4		1.6		1.7		2.0		2.3		2.6		Dia. mm
Pitch	0.45		0.50		0.50		0.64		0.79		0.91		Pitch
Dia. C max	1.43		1.63		1.73		2.04		2.34		2.64		Dia. C max
Head Type	TYPE 1	TYPE 3	TYPE 1	TYPE 3	TYPE 1	TYPE 3	TYPE 1	TYPE 3	TYPE 1	TYPE 3	TYPE 1	TYPE 3	Head Type
d1 - max	2.00	2.50	2.40	2.80	2.50	3.00	3.00	3.50	3.50	4.00	4.00	4.50	d1 - max
k - ref	0.45	0.70	0.50	0.80	0.50	0.80	0.60	0.90	0.70	1.00	0.80	1.10	k - ref
Recess	0		0		0		0		0		0		Recess



Scan the QR Code to view technical drawings for this product range  
<https://www.lancasterfastener.com/drawings-for-mi-jsb3hcskbl>

L - Length mm													L - Length mm
3		●		●		●							3
4						●							4
5		●		●		●				●		●	5
6		●		●			●						6
8							●						8
10							●			●		●	10
12													12
-													-
-													-
-													-
-													-
-													-
-													-
-													-
-													-
-													-
-													-

● Steel / Black Plated (CR3) - preferred and available from stock.

PRODUCT CODE EXAMPLE  
 MI-JSB3HCSK14003BL

PRODUCT DESCRIPTION EXAMPLE  
 1.4 x 3 Cross Recess (H) Countersunk Type 3 JCIS Type B Steel / Black (CR3)

Screws for Plastics  
 ISO & DIN 7500 Tap-Fix® Screws  
 Machine Screws  
 Self-Tapping Screws  
 Self-Drilling Screws  
 Micro Diameter Screws  
 Hammer Drive Screws  
 K-Series® Setzmuttern  
 Rivet Bushes  
 Self-Clinching Fasteners  
 CD Weld Studs  
 Brass Inserts for Plastics