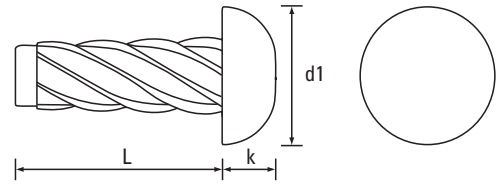
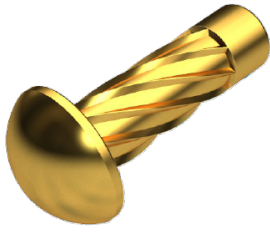


Hammer Drive Screws

Screws for Metal Applications

Round Type U BS 4174

Electro Brass Plated



Dia. mm	1.52	1.90	2.54	2.95	3.56	4.24	4.62	Dia. mm
Dia. Gauge	00	0	2	4	6	8	10	Dia. Gauge
d1 - max	2.51	3.22	4.11	5.36	6.60	7.85	9.12	d1 - max
k - max	0.86	1.24	1.75	2.18	2.62	3.05	3.48	k - max
s - A/F	-	-	-	-	-	-	-	s - A/F
Recess	-	-	-	-	-	-	-	Recess



Scan the QR Code to view technical drawings for this product range
<https://www.lancasterfastener.com/drawings-for-hdurhdeb>

L - Length ins								L - Length ins
1/8	●	●	●					1/8
3/16	●	●	●	●				3/16
1/4	●	●	●	●	●			1/4
5/16	●	●	●	●	●			5/16
3/8	●	●	●	●	●		●	3/8
1/2				●	●		●	1/2
-								-
-								-
-								-
-								-
-								-
-								-
-								-
-								-
-								-
-								-
-								-
-								-
-								-

● Electro Brass Plated - preferred and available from stock.

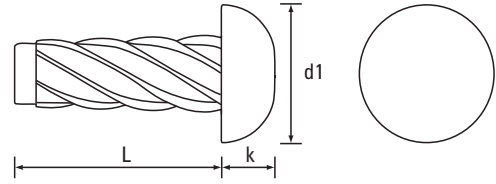
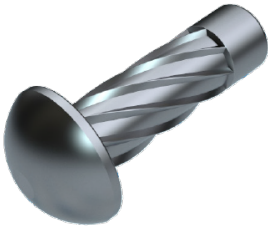
PRODUCT CODE EXAMPLE	PRODUCT DESCRIPTION EXAMPLE
HDURHD0095EB	0 x 3/8 Type U Round BS 4174 Hammer Drive Screw Electro Brass Plated

Hammer Drive Screws

Screws for Metal Applications

Round Type U BS 4174

Nickel Plated



Dia. mm	1.52	1.90	2.54	2.95	3.56	4.24	4.62	Dia. mm
Dia. Gauge	00	0	2	4	6	8	10	Dia. Gauge
d1 - max	2.51	3.22	4.11	5.36	6.60	7.85	9.12	d1 - max
k - max	0.86	1.24	1.75	2.18	2.62	3.05	3.48	k - max
s - A/F	-	-	-	-	-	-	-	s - A/F
Recess	-	-	-	-	-	-	-	Recess



Scan the QR Code to view technical drawings for this product range
<https://www.lancasterfastener.com/drawings-for-hdurhdnp>

L - Length ins								L - Length ins
1/8			●					1/8
3/16			●	●	●			3/16
1/4			●	●	●			1/4
5/16				●	●			5/16
3/8			●	●	●		●	3/8
1/2				●	●		●	1/2
-								-
-								-
-								-
-								-
-								-
-								-
-								-
-								-
-								-
-								-
-								-

● Nickel Plated - preferred and available from stock.

PRODUCT CODE EXAMPLE
HDURHD35130NP

PRODUCT DESCRIPTION EXAMPLE
6 x 1/2 Type U Round BS 4174 Hammer Drive Screw Nickel Plated

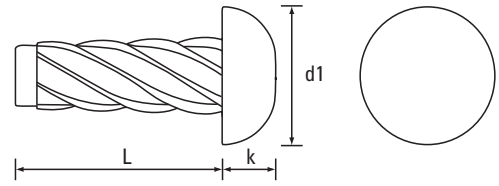
Screws for Plastics
 ISO & DIN 7500 Tap-Fix® Screws
 Machine Screws
 Self-Tapping Screws
 Self-Drilling Screws
 Micro Diameter Screws
 Hammer Drive Screws
 K-Series® Setzmuttern
 Rivet Bushes
 Self-Dinching Fasteners
 CD Weld Studs
 Brass Inserts for Plastics

Hammer Drive Screws

Screws for Metal Applications

Round Type U BS 4174

Steel / Zinc Plated (CR3)



Dia. mm	1.52	1.90	2.54	2.95	3.56	4.24	4.62	Dia. mm
Dia. Gauge	00	0	2	4	6	8	10	Dia. Gauge
d1 - max	2.51	3.22	4.11	5.36	6.60	7.85	9.12	d1 - max
k - max	0.86	1.24	1.75	2.18	2.62	3.05	3.48	k - max
s - A/F	-	-	-	-	-	-	-	s - A/F
Recess	-	-	-	-	-	-	-	Recess



Scan the QR Code to view technical drawings for this product range
<https://www.lancasterfastener.com/drawings-for-hdurhdal>

L - Length ins								L - Length ins
1/8			●					1/8
3/16			●	●	●			3/16
1/4			●	●	●			1/4
5/16			●	●	●			5/16
3/8			●	●	●		●	3/8
1/2				●	●		●	1/2
-								-
-								-
-								-
-								-
-								-
-								-
-								-
-								-
-								-
-								-
-								-
-								-

● Steel / Zinc Plated (CR3) - preferred and available from stock.

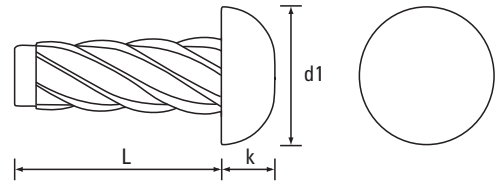
PRODUCT CODE EXAMPLE HDURHD22095ZC	PRODUCT DESCRIPTION EXAMPLE 2 x 3/8 Type U Round BS 4174 Hammer Drive Screw Steel / Zinc Plated (CR3)
---------------------------------------	--

Hammer Drive Screws


Screws for Metal Applications

Round Type U BS 4174

A2 Stainless Steel



Dia. mm	1.52	1.90	2.54	2.95	3.56	4.24	4.62	Dia. mm
Dia. Gauge	00	0	2	4	6	8	10	Dia. Gauge
d1 - max	2.51	3.22	4.11	5.36	6.60	7.85	9.12	d1 - max
k - max	0.86	1.24	1.75	2.18	2.62	3.05	3.48	k - max
s - A/F	-	-	-	-	-	-	-	s - A/F
Recess	-	-	-	-	-	-	-	Recess

L - Length ins	 Scan the QR Code to view technical drawings for this product range https://www.lancasterfastener.com/drawings-for-hdurhda2							L - Length ins
1/8	●	●	●					1/8
3/16	●	●	●	●	●			3/16
1/4	●	●	●	●	●			1/4
5/16	●	●		●	●			5/16
3/8	●	●		●	●		●	3/8
1/2				●			●	1/2
-								-
-								-
-								-
-								-
-								-
-								-
-								-
-								-
-								-
-								-
-								-

● A2 Stainless Steel - preferred and available from stock.

PRODUCT CODE EXAMPLE
HDURHD35080A2

PRODUCT DESCRIPTION EXAMPLE
6 x 5/16 Type U Round BS 4174 Hammer Drive Screw A2 Stainless Steel

Screws for Plastics
ISO & DIN 7500 Tap-Fix® Screws
Machine Screws
Self-Tapping Screws
Self-Drilling Screws
Micro Diameter Screws
Hammer Drive Screws
K-Series® Setzmuttern
Rivet Bushes
Self-Clinching Fasteners
CD Weld Studs
Brass Inserts for Plastics